



PC-BPE019

Midscapular Thoracentesis Ultrasound Training Model

Product Overview



The model features a realistic human torso shape, including skin, subcutaneous tissue, chest wall, ribs, lungs, pleural cavity, pleural effusion, diaphragm, etc. The material of the model has acoustic and density characteristics similar to human tissues, supporting blind puncture and ultrasound-guided puncture. It provides reliable assistance for medical practitioners in training for thoracentesis based on surface landmarks and ultrasound guidance.

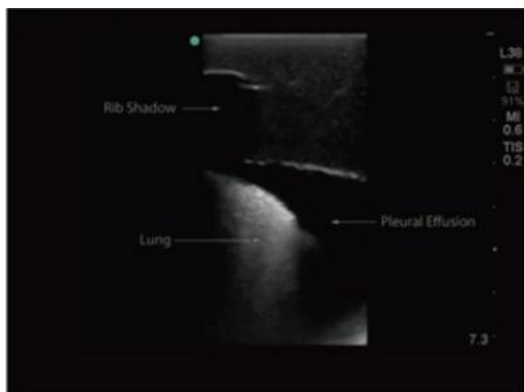
Features

1. The touch feeling is realistic and the imaging is realistic.
2. It includes the chest wall tissue, the 6th, 7th, 8th and 9th intercostal spaces and intercostal intervals, pleural cavity, both lungs, diaphragm and splenic cavity.
3. After the correct and successful puncture of pleural effusion, simulated pleural effusion can be aspirated.
4. After completing the pleural puncture operation to aspirate the simulated pleural effusion, the liquid can be easily refilled from the quick - filling port or refilled with an infusion bag.
5. It is suitable for any brand of ultrasonic equipment.

Exploration and Puncture Training



Ultrasonic examination: When using a real ultrasound machine for examination, an adequate amount of coupling agent should be used.



Precautions

1. To ensure the best user experience, you need to use a needle and cannula of appropriate size. We recommend using an 18 - 21G needle and the matching cannula for vascular puncture. Although a thicker needle can be used for puncture on the ultrasonic phantom skin, it takes more time to heal by itself or may not heal completely.
2. Please do not use a needle thicker than 18G.



3. If a needle thinner than 22G is inserted too violently, the needle may bend inside the phantom and drag and damage the phantom material.
4. Roughly changing the angle in the phantom instead of retracting before puncturing again may cause irreversible damage.
5. A blunt needle will also drag and damage the phantom material and cause irreversible damage. Therefore, each needle should be replaced after no more than 10 punctures.

Care & Maintenance

After each use, clean with neutral soap and water. Dry with a soft cloth by patting instead of wiping to protect the openings inserted into the blood vessels. The phantom can be placed at room temperature in a storage cabinet or on a countertop. Do not place other items on the model to avoid deformation of the model.

Configuration List

No.	Item	Unit	Quantity
1	Midscapular Thoracentesis Ultrasound Training Model	Piece	1
2	Instructions for Use	Book	1
3	Precautions for the Use of Blue Molds	Sheet	1