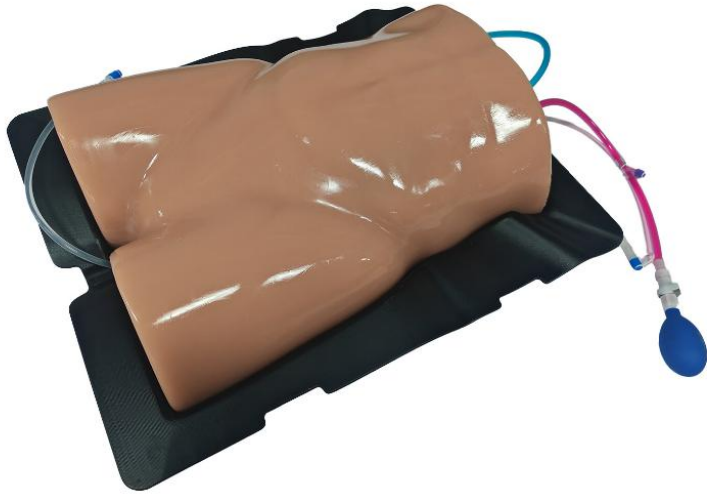




PC-BPE020.01

**Paracentesis Ultrasound Training
Model(with Femoral Vessels &
Femoral Nerves)**

Overview



The model features realistic internal and external anatomical structures, designed to train clinicians in ultrasound-based identification of ascites and complete ultrasound-guided procedural workflows including abdominal paracentesis, drainage, and medication infusion. It allows adjustable ascites volume to customize procedural difficulty levels.

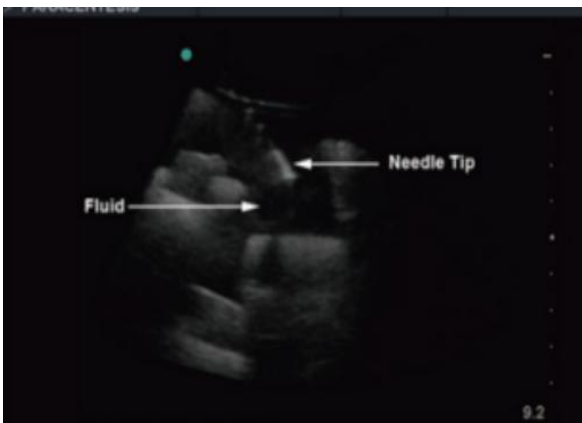
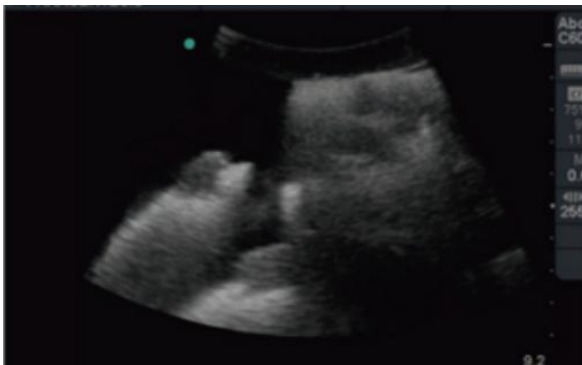
Features

1. The model features precise internal and external anatomical structures, supporting skill training in abdominal paracentesis, drainage, and medication infusion through both ultrasound-guided and surface anatomical landmark-based approaches.
2. It incorporates anatomical components including the right hepatic lobe, small intestine, transverse colon, and ascites, all demonstrating realistic imaging characteristics under ultrasound.

3. The ascites volume can be adjusted according to instructional needs, offering a progressive training curriculum ranging from large to minimal fluid quantities.

Ultrasound-guided Puncture Training

When using a real ultrasound machine for scanning, a sufficient amount of coupling gel must be applied.



Precautions

1.Use Appropriate Needles and Sheaths

To ensure the best user experience, you need to use appropriately sized needles and sheaths. We recommend using 18-21G needles and corresponding sheaths for vascular access. While the skin of the ultrasound model allows for the use of larger needles, it requires more time to self-heal or may not fully heal.

2.Avoid Using Needles Thicker Than 18G

Do not use needles thicker than 18G.

3.Careful with Thin Needles

Needles thinner than 22G can bend if inserted too forcefully, causing them to drag and damage the model material.

4.Avoid Abrupt Angle Changes

Abruptly changing the needle angle within the model, rather than withdrawing and reinserting, may cause irreparable damage.

5.Replace Dull Needles Regularly

Dull needles can drag the model material and cause irreparable damage, so each needle should be used for a maximum of 10 punctures before being replaced.

Maintenance

After each use, clean with a neutral soap solution. Gently pat dry with a soft cloth (do not rub) to protect the openings of the embedded vessels. Once the model is fully dry, lightly apply a moderate amount of baby powder. Store the model at room temperature in a storage cabinet or on a countertop. Do not place other objects on the model to avoid deformation.

Configuration List

No.	Item	Unit	Qty
1	Paracentesis Ultrasound Training Model(Basic model)	Piece	1
2	Simulated Blodd PC-BP037.01	Bottle	1
3	Syringe (50ml)	Piece	1
4	User Manual	Copy	1
6	Usage Precautions	Copy	1